


## PRODUCT LIST

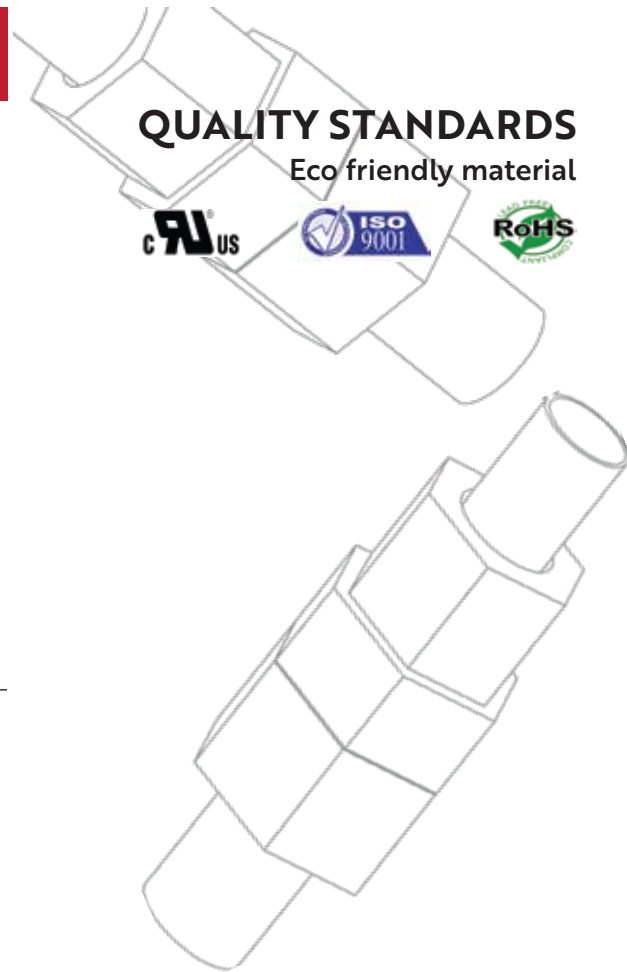
Product	Size	Part No.
 Flare Connector Multi Angle	1/4"	FCMA1400
	3/8"	FCMA3800
	1/2"	FCMA1200
	5/8"	FCMA5800
	3/4"	FCMA3400

 Swage Union	3/8"	SWUN3800
	5/8"	SWUN5800
	3/4"	SWUN3400
	7/8"	SWUN7800

 Flare Connector Reducer Special	1/2"-3/8"	FCRS1238
--------------------------------------------------------------------------------------------------------------------------	-----------	----------

## QUALITY STANDARDS

Eco friendly material



## CONTACT US

2701 Old Denton Rd; Suite 270  
Carrollton, TX 75007

Tel: 214.304.2083

Fax: 214.889.6060

sales@smartlockfitting.com

www.smartlockfitting.com

SMARTLOCK

## INNOVATIVE HVAC/R FITTING FOR ALL REFRIGERANT LINES


METAL TO METAL SEALING TECHNOLOGY




NO BRAZING  
NO FLARING  
NO LEAKING

NO SPECIAL TOOL

WWW.SMARTLOCKFITTING.COM

Product	Size	Part No.
 Union Straight	1/4"	UNST1400
	3/8"	UNST3800
	1/2"	UNST1200
	5/8"	UNST5800
	3/4"	UNST3400
7/8"	UNST7800	

 Union Reducer	3/8"-1/4"	UNRD3814
	1/2"-3/8"	UNRD1238
	5/8"-1/2"	UNRD5812
	3/4"-5/8"	UNRD3458
7/8"-3/4"	UNRD7834	

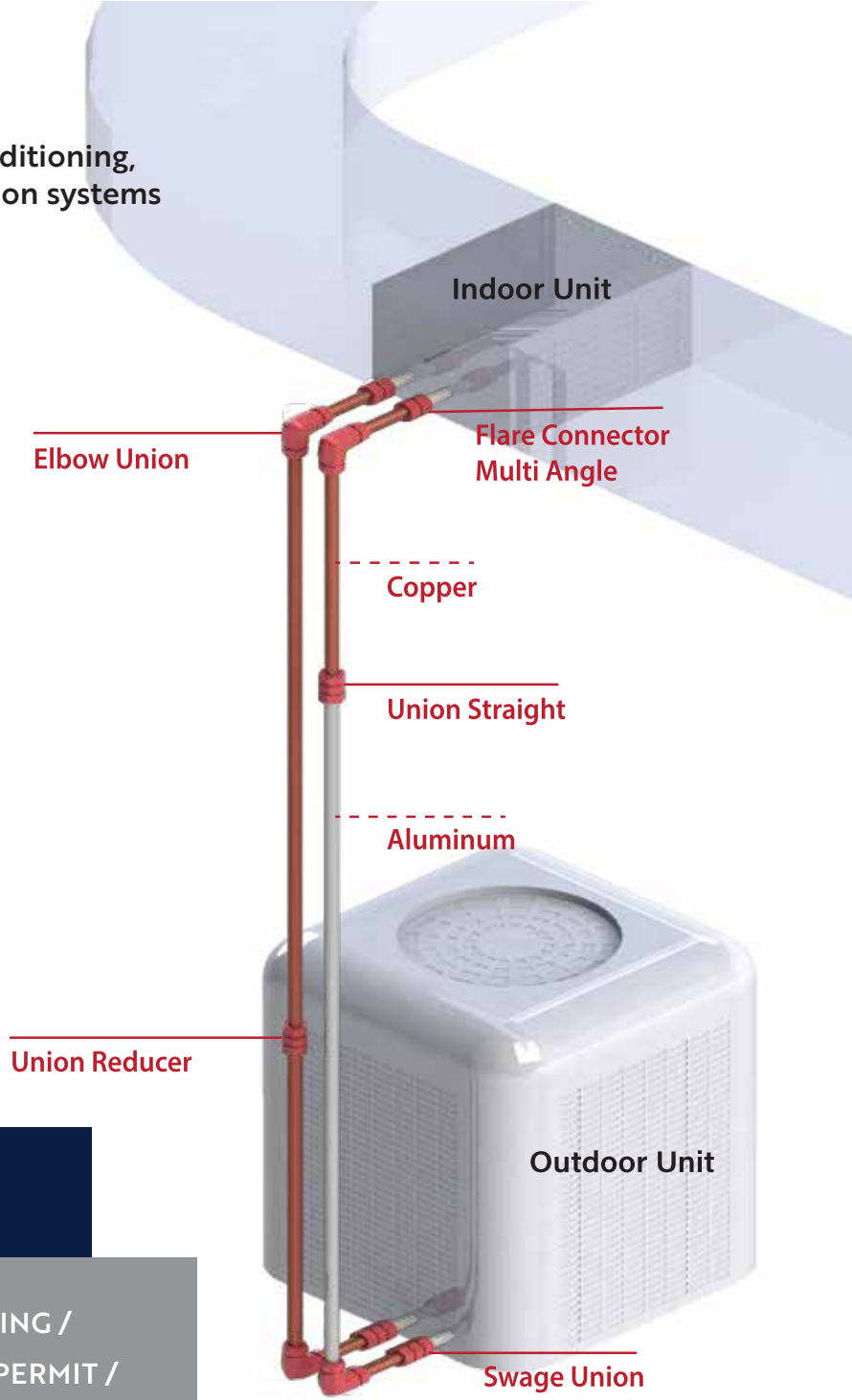
 Elbow Union	1/2"	ELUN1200
	5/8"	ELUN5800
	3/4"	ELUN3400
	7/8"	ELUN7800

# APPLICATION

Simple Solution for Air Conditioning, Heat Pump AND Refrigeration systems

Including:

- Ductless Mini-Splits
- Standard Unitary Swages
- Multi Zone Systems
- VRF Systems
- Refrigeration Systems



# TECHNOLOGY

Applicable for Copper and Aluminum tubing. Other material available (contact us).



# METAL TO METAL SEALING TECHNOLOGY



Elastomers are for vibration dampening and for keeping dust and moisture out. (Does not make a seal)

# APPLICATION SPECIFICATIONS

High Temperature  
-40°C to 150°C (-40°F to 302°F)

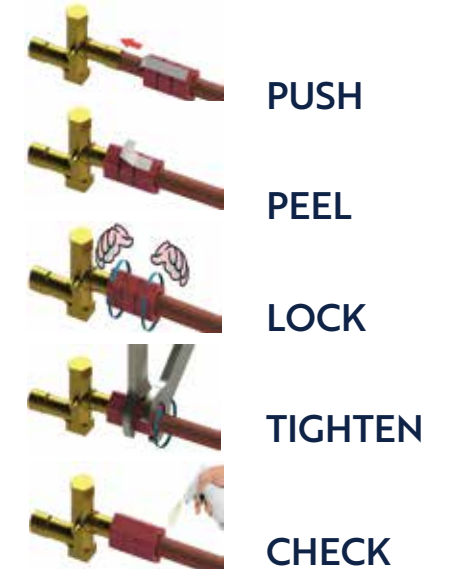
Design Pressure Range  
1/4": 1700 psig to 7/8": 960 psig

Burst Pressure Range  
1/4": 9700 psig to 7/8": 4800 psig

Refrigerant - any including:  
R-717 (Ammonia)  
R-410A (R-32 50%, R-125 50%)  
R-22 (Chlorodifluorethane)  
R-134a (1,1,1,2-Tetrafluoroethane)  
R-744 (Carbon Dioxide)  
R-600a (Isobutane)

# EASY INSTALLATION

Reduce your labor cost and installation time!



# NO

BRAZING / FLARING / WELDING /  
FIRE HAZARD / HOT WORK PERMIT /  
SPECIAL GAUGE / MARKER /  
SPECIAL TOOL / OXIDATION, NITRO